

# PAX FLOW SOLUTION

powered by  CAST

## REAL TIME PREDICTION AND PAX FLOW OPTIMIZATION



# REAL TIME PREDICTION AND PAX FLOW OPTIMIZATION

The **PAX FLOW SOLUTION** provides fast-time predictive analysis of airport terminal processes. Integrated to the airport's operation systems, this solution supports the best possible view on the next hours of operations. Thus, airport operators can use and staff resources more efficiently than before.



The **PAX FLOW SOLUTION** is designed especially for the needs of airport operators to support the operational terminal processes. The solution can be used for real-time prediction of terminal processes in an operational environment as well as for tactical terminal capacity planning.

To optimize passenger flows and process planning on the day of operation, the solution accesses the airport's IT data like AODB, resource management systems and live process monitoring systems. PAX Flow Solution automatically and regularly simulates the next hours of operation based on the latest system data available. This gives the airport operator the most precise real-time prediction on the passenger flows in the terminal and allows an optimized resource supply including the expected waiting times.

The execution of "what-if-scenarios" allows the user to analyse and compare different scenarios. Hence, the airport operator will be perfectly prepared if there are for example additional flights, a failure of resources or a delayed flight. Dashboard views on the results compared to live-data give a predictive insight and common understanding of the expected terminal operation to all relevant stakeholders. Thus it becomes easy to identify the most suitable solution to overcome the challenges of changing conditions.

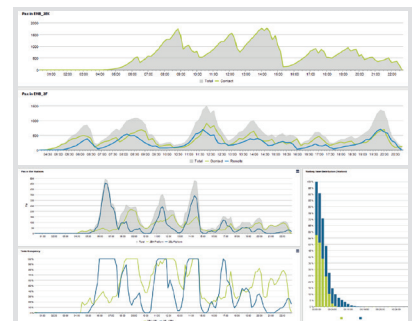
## KEY FEATURES OF THE PAX FLOW SOLUTION

- » Accurate prediction of the number of expected passengers at all terminal processes and areas
- » Advanced facility requirement (FR) features to optimize the FR calculation
- » "What-if" analysis for testing operational concepts
- » Dashboard views with integrated live data for easy access to results
- » Cloud or on-premises installation for flexible usage with the airports IT systems
- » Continuous analysis of real-time data sources to re-calibrate the system
- » Experts support through ARC staff for the initial model development, system calibration, change management and training

“ PAX Flow Solution provides real-time simulation and prediction for terminal passenger flow and resource demand, to provide a prospective view of terminal operation and support operational resource re-allocation in advance. I consider this project to be measurably successful. ARC was diligent, driven and focussed on achieving our objectives. I highly recommend the solutions of ARC. **M. Dauner, Munich Airport** ”

## FACTS AND BENEFITS

- ✓ Realistic prediction for and on day of operations
- ✓ Demand-based capacity planning and operations
- ✓ Improved passenger flow management
- ✓ Resource optimization
- ✓ Supports strategic and tactical planning
- ✓ What-if scenario analysis
- ✓ Always up-to-date data base



## WANT TO STEP FURTHER?

The combination with **SECURITY MANAGEMENT SOLUTION** offers the unique opportunity to include customized and highly accurate prediction of resource supply. Included Change Management guarantees a successful realization of the new approach.



### Airport Research Center GmbH

Bismarckstr. 61

52066 Aachen | Germany

Phone +49 241 16 84 3-0

[info@cast-simulation.com](mailto:info@cast-simulation.com)

[www.cast-simulation.com](http://www.cast-simulation.com)